

Spraggs Brag

April 2005



NZ REGISTERED



MASTER BRICKLAYERS

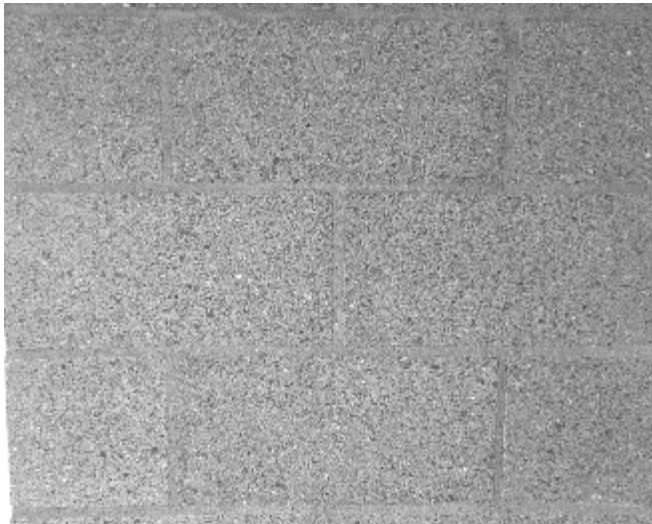
HONED MASONRY

Honed Masonry is a product used mainly in the larger centres of Auckland, Wellington, and Christchurch etc.

NZ REGISTERED



STRUCTURAL MASON



Honing is the grinding off, of a few millimetres of the surface of the block. The finished product has a sealant applied, giving it a polished concrete look.

We have built a sample panel in our office, (at 68 Gladstone Road - well worth a look). Call Steve or Adrian and book a time to view!



What: Residential House

Where: Hope

Who: Richard Sellars, Architect—Stuart Gibson, Builder

Firth Product: 100 Series Block

Spraggs Brag: Unique design using 100 series block as a veneer.

The owner commented that with the combination of corrugated galvanised steel and block, the house absorbs the heat and keeps it in. It also reduces noise levels.





What: House—Driveway Retaining Walls
Where: Panarama Heights
Who: Darrell Gardiner Builders
Firth Product: 250 Series Block
Spraggs Brag: Darrell commented that Spraggs were most cooperative with the timing of this job, as they were delayed several times while awaiting consent, but as soon as the consent was received Spraggs commenced the job. The workmanship was good and the guys were great to work with.

What: Refurbishment from school dormitory to residential dwelling - Structural Partition Walls
Where: 404 Trafalgar Street
Who: McCully Builders
Firth Product: 200 Series Common Blocks.
Spraggs Brag: This was an existing building which required internal structural partitioned walls to be erected two stories up! This was a bit of hard yakka having to cart the blocks up two stories, but blocks were the most appropriate thing to use in a difficult access area.



PO Box 3563,
 Richmond,
 Nelson
 Phone 03 544-4440
 Fax 03 541-0076

Adrian Spraggs - Director 0274 445-536
Steve Cobb - Manager 027 226-2355
 Email: spraggsbrickies@xtra.co.nz
 Website: www.spraggsbricklayers.co.nz